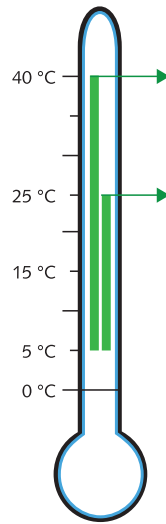


## Storage and Shelf life

Using DrugWipe® after expiration date or improper storage may lead to false test results. Exposed DrugWipe® tests must be discarded.

Improper storage at high temperatures or frost damage the test.



Avoid temperatures above 40 °C!  
Test performance will be affected.

5 - 40 °C  
DrugWipe® can be used in the temperature range of 5 to 40 °C.

5 - 25 °C  
Store DrugWipe® in the long-term at temperatures from 5 to 25 °C.

For DrugWipe® use below 5 °C, allow the test to reach room temperature prior to use (e.g. warm-up in your hands).

Freezing damages the tests. Even transport below 0 °C may cause breakage of the glass ampoule.

## Quality Control

DrugWipe® S tests have an integrated control line (CL). The control line indicates proper function and correct performance of the test. Observe additional quality control provisions valid for your establishment.

## Cross Reactions

The substances which cross-react with DrugWipe® S tests have been analysed in our laboratory. On request we will inform you the about substances with cross reactions.

Further information for registered users:

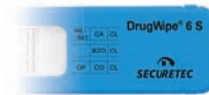
[www.securetec.net](http://www.securetec.net)

## Performance data

Substances	THC	OPI	COC	AMP/MET
Cut-off* [ng/ml]	10	10	10	80
Quantity (number)	97	99	99	99
Sensitivity [%]	94	100	100	100
Specificity [%]	100	100	98	99
Accuracy [%]	99	100	98	99

\* values declared by the manufacturer.

## DrugWipe® Product Lines



Saliva



Sweat



Surfaces



Surfaces,  
Sweat,  
Saliva

For the detection of cannabis, opiates, cocaine, amphetamines/methamphetamines/ecstasy, methadone, benzodiazepines.



Securetec Detektions-Systeme AG · Eugen-Sänger-Ring 1 · 85649 Brunntal · Germany  
T +49 89 203080-1651 · F +49 89 203080-1652

[info@securetec.net](mailto:info@securetec.net) · [www.securetec.net](http://www.securetec.net)

© 2012 Securetec Detektions-Systeme AG · 70074CE-v01-EN-120725



## DrugWipe® 5 S Instructions

Saliva test for the detection of

Cannabis

Opiates

Cocaine

Amphetamines/Methamphetamines/Ecstasy

Part-No. S 502 G

## Intended Use

DrugWipe® 5 S detects drugs in saliva. The immunological test detects cannabis, opiates, cocaine, amphetamines and methamphetamines (ecstasy). The analysis provides a visible, qualitative result within just a few minutes.

The DrugWipe® 5 S tests are designed to be used by trained professional staff (police forces, customs officers, qualified medical personnel etc.). We recommend to verify positive samples by a second chemical analysis such as gas chromatography and mass spectrometry (GC-MS).

The tests can only be used once for each sample.

## Test Principle

DrugWipe® 5 S tests are based on an immunological process. Sampling of saliva is carried out by collecting on the tongue or from the interior of the cheeks. The sampling pad transfers the saliva onto the test strips. The detection zones contain drug-specific antibodies, dyed red. If drugs are present in the sample they will bond with the antibodies.

DrugWipe® 5 S contains an integrated ampoule filled with liquid. The test starts once the glass ampoule is crushed and the liquid is released. The liquid carries the antibody-bound drugs towards the test line.

## Package Content

The test package contains:

- 1 DrugWipe® 5 S saliva test

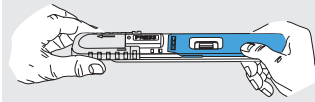
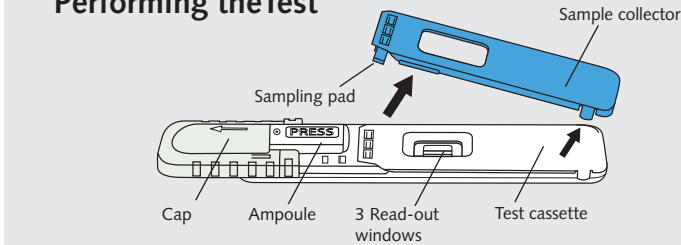
Not provided with the test, but required in individual cases:

- 1 timer
- 1 pair of single-use gloves
- 1 torch for interpretation in the dark

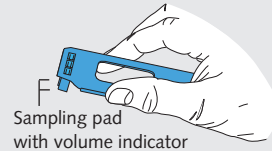
## Preparing for the Test

1. Check date of expiration on the package. Discard test if expiration date is exceeded.
2. Check package for damage. Discard test if package is damaged, humid inside, or if control lines are already red.
3. Treat each sample as potentially infectious. During analysis wear single-use gloves.
4. Open package at the marked spot shortly before use.

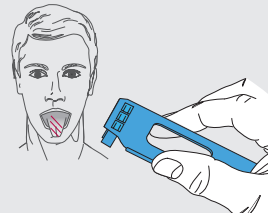
## Performing the Test



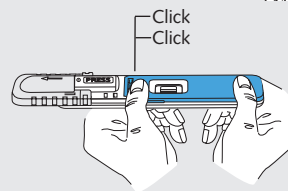
1. Move cap in the direction of the arrow, until the word PRESS is entirely visible.



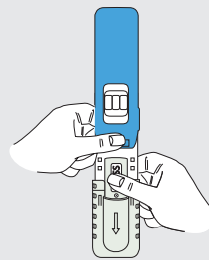
2. Remove the blue sample collector from the white test cassette. **Do not touch sampling pads.**



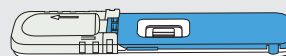
3. Advise the test person to move his/her tongue around the bottom of the cheek 3 times. With the sample collector saliva is wiped from the tongue or interior cheek. Check sampling pads for colour change from red to yellow: This indicates sufficient saliva collection.



4. Place the blue sample collector back onto the white test cassette and press. Both sampling pads must connect with an **audible double click.**



5. Hold the test cassette vertically, ampoule at the bottom. Squeeze your thumb thoroughly on the word PRESS in order to break the ampoule. Hold the test cassette with the broken ampoule **vertically for 10 to 15 seconds.**

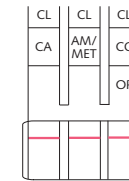


6. Lay the test on a horizontal surface for 8 minutes. **Do not move the test during that time.** Then read the test results.

## Results Interpretation

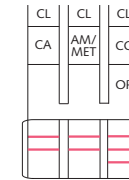
Each of the three read-out windows shows one or two substances and one control line. The abbreviations stand for:

- CA Cannabis (THC/Marijuana/Hashish)
- AM Amphetamines
- MET Methamphetamines
- CO Cocaine/Crack
- OP Opiates (Heroin/Morphine)
- CL Control line



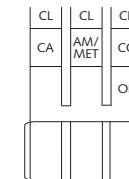
### Negative Result = No drug consumption

Test is generally valid when the control lines on each strip turn red. Without test lines the test is negative for drugs.



### Positive Result = Drug consumption

Test is generally valid when all three control lines turn red. Test result is positive when the red control line and one or more red test lines appear.



### Invalid Result = Repeat test

Test is generally invalid when either one or all three control lines do not turn red. Repeat the analysis using a new DrugWipe® 5 S test

## Important

- In case of strongly positive samples visible test lines may already appear after 3 minutes.
- Read the results after 8 minutes.
- The results are valid for 10 minutes after test end.
- A positive result is indicated even if the colour change of the red test lines is only slight or incomplete.
- Read the test in adequate lighting, e.g. interior light of the car or by using a torch.
- Please note that red-green colour deficiency may impair a correct interpretation of the test.